



# A COLLABORATIVE APPROACH TO WATERSHED MANAGEMENT



# WHAT IS A WILD AND SCENIC RIVER?



*Middle Fork Salmon River, ID*

# PARTNERSHIP WILD AND SCENIC RIVERS

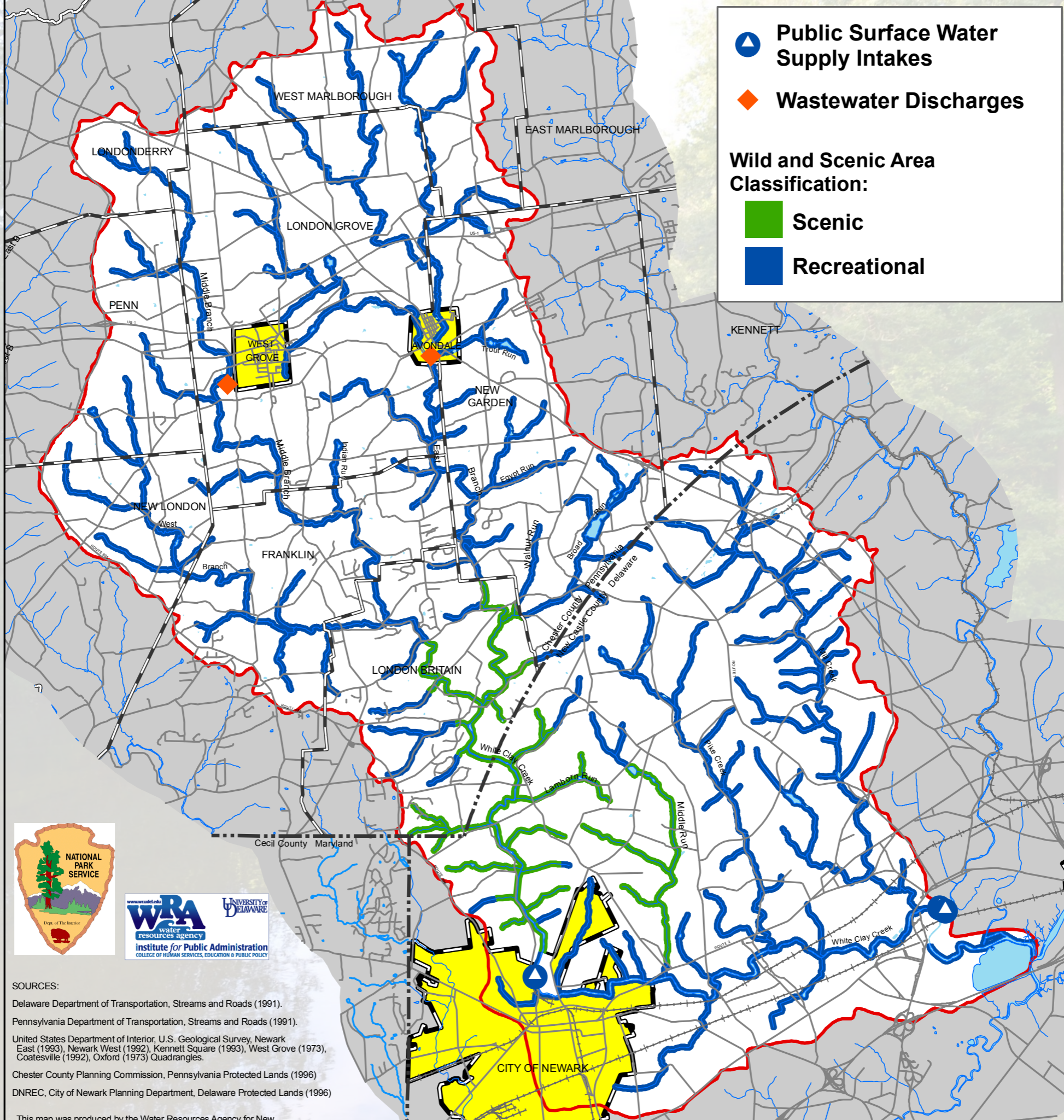






*White Clay Creek, DE/PA*

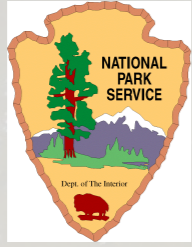


*12 Pennsylvania Municipalities*





 **Public Surface Water Supply Intakes**  
 **Wastewater Discharges**  
**Wild and Scenic Area Classification:**  
 **Scenic**  
 **Recreational**



**SOURCES:**  
 Delaware Department of Transportation, Streams and Roads (1991).  
 Pennsylvania Department of Transportation, Streams and Roads (1991).  
 United States Department of Interior, U.S. Geological Survey, Newark East (1993), Newark West (1992), Kennett Square (1993), West Grove (1973), Coatesville (1992), Oxford (1973) Quadrangles.  
 Chester County Planning Commission, Pennsylvania Protected Lands (1996)  
 DNREC, City of Newark Planning Department, Delaware Protected Lands (1996)

This map was produced by the Water Resources Agency for New



# SAMPLE COLLABORATION



**BRANDYWINE  
CONSERVANCY**



*Ours to Enjoy. Ours to Protect.*





# LAND PROTECTION

- 1015 acres preserved since 2008
- Total Cost \$11.7 million
- WCWS costs \$174K
- \$1 : \$67 ROI



**BRANDYWINE CONSERVANCY**

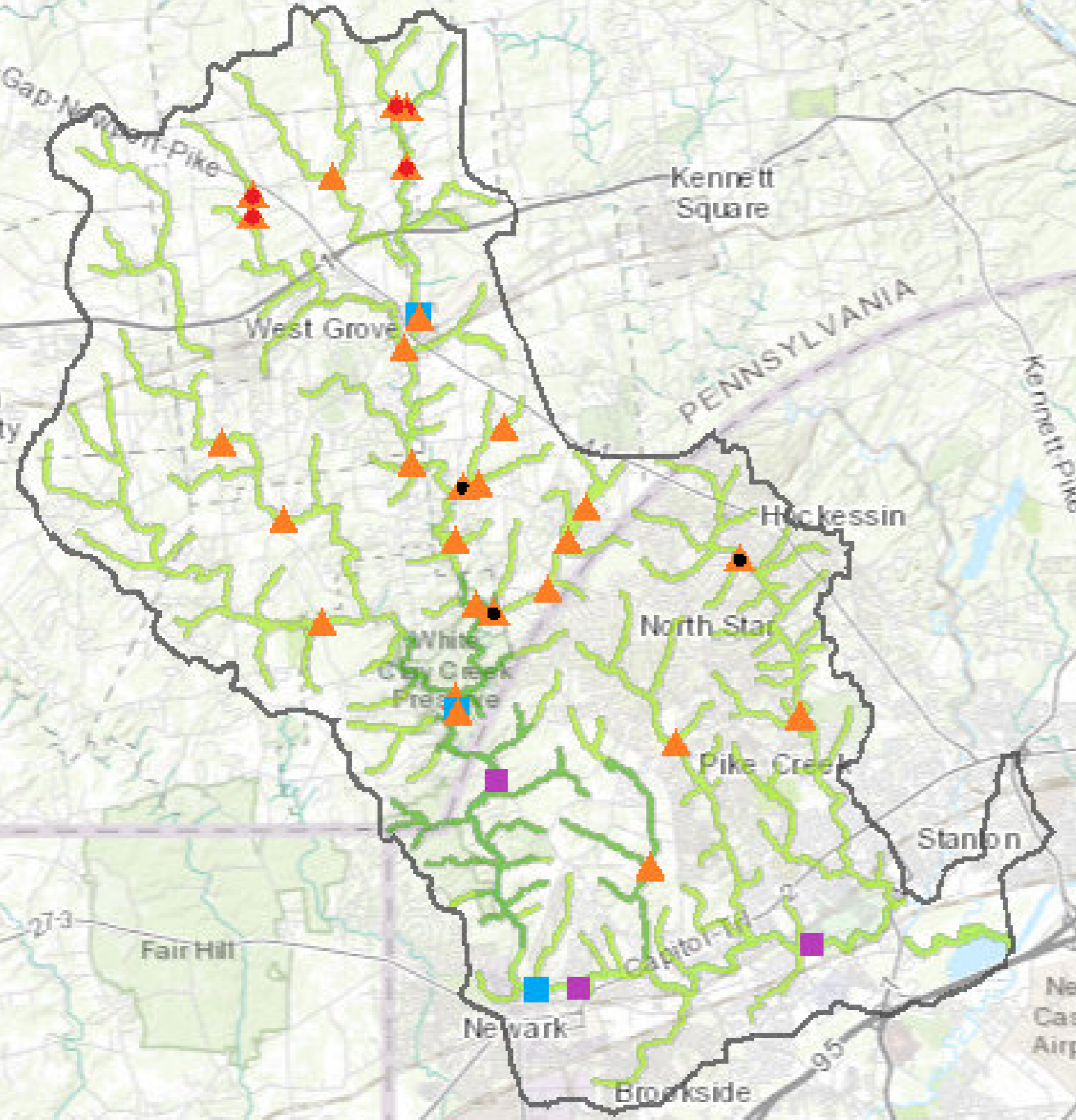


# EDUCATION & OUTREACH



*Christina Watersheds  
Municipal Partnership*

**Catch The Rain**



# WATER QUALITY MONITORING



# CITIZEN SCIENTISTS



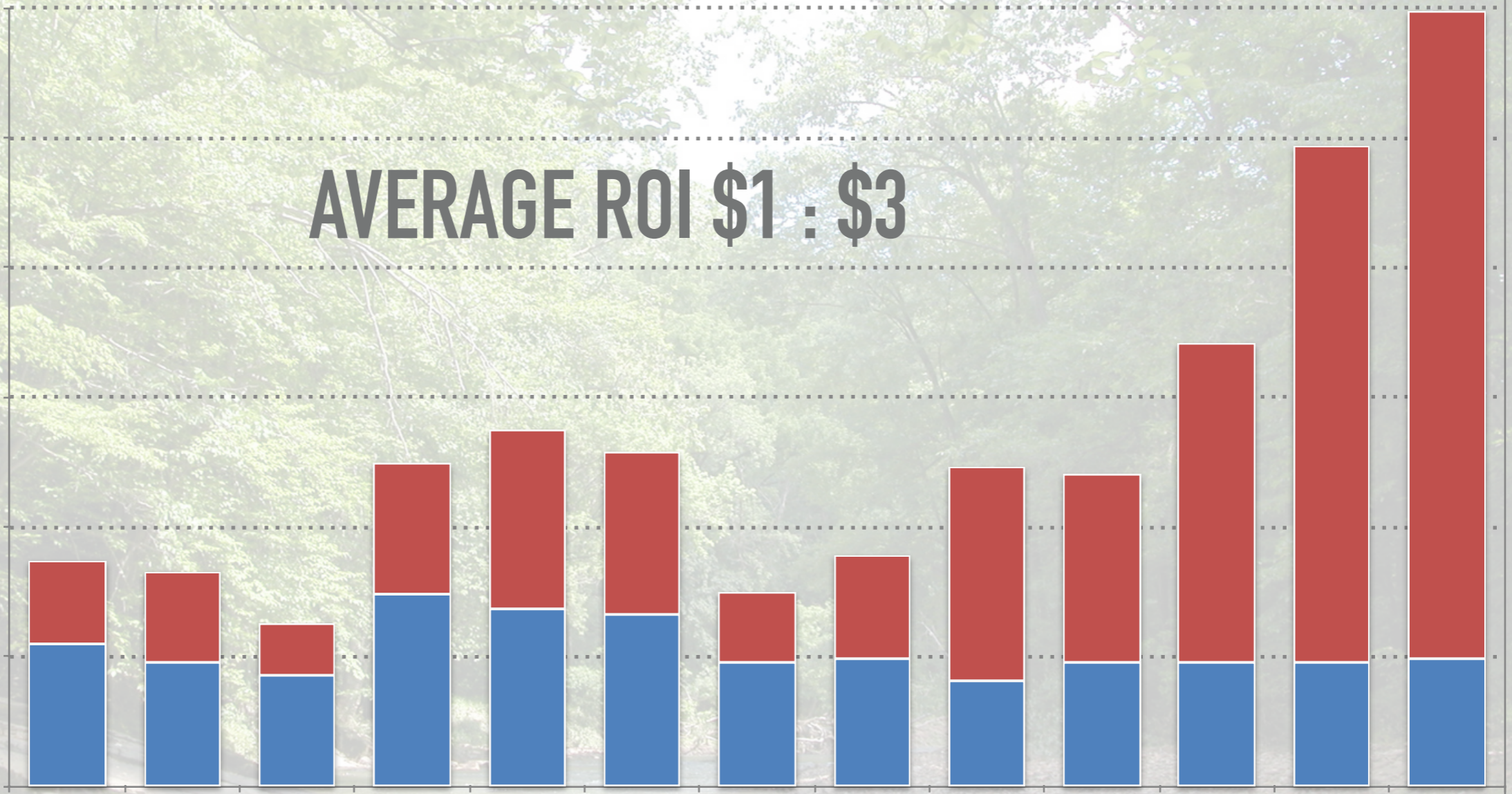
# MAXIMIZING FEDERAL DOLLARS

\$600,000  
\$500,000  
\$400,000  
\$300,000  
\$200,000  
\$100,000

AVERAGE ROI \$1 : \$3

2005 2007 2009 2011 2013 2015 2017

- Total Match (In-kind and cash)
- Total Federal Support





# White Clay Creek Fest

Saturday, May 5  
Noon – 4:00pm

Carpenter Recreation Area,  
White Clay Creek State Park

## Main Stage Schedule:

Enjoy music by  
*Unity Reggae*,  
entertainment by  
*Juggling Hoffmans*,  
local food trucks,  
kid's activities,  
hikes, exhibits,  
*and more!*

Noon - 12:15	Welcome
12:15-1:00	Unity Reggae
1:00 – 1:30	Clem Bowen, Storyteller
1:30 – 2:15	Juggling Hoffmans
2:15 – 3:30	Unity Reggae

(302) 368-6900 • [destateparks.com/wccsp](http://destateparks.com/wccsp)

Sign up at [whiteclay.org](http://whiteclay.org) for a pre-Fest tour of the Newark Reservoir.

